

SPHERE LOCK™

BALL AND SOCKET COUPLINGS

Sterling

Hose, Reel & Supply, LLC.

855-577-HOSE

WWW.STERLINGHOSE.COM





Index

Advantages..... 143
 Connection Types 144

TYPE B

	Female Socket x Hose Shank 145
	Female Socket x Hose Shank HD Crimp 145
	Female Socket x Polycrimp HDPE.... 146
	Locking Lever Ring 146
	Locking Ring..... 146
	Female Socket x Male NPT 147
	Male Ball x Hose Shank 145
	Male Ball x Hose Shank HD Crimp... 145
	Male Ball X Polycrimp HDPE 146
	Male Ball x Male NPT..... 147
	Male Ball Plug..... 147
	Female Socket Plug 148
	Male Ball x 150# ASA Flange 148
	Female Socket x 150# ASA Flange..... 148
	90° Elbow Female Socket x Male Ball 149

TYPE B (continued)

	45° Elbow Female Socket x Male Ball 149
	Female Socket x Male Ball Reducer 149
	Male Ball x Round Hole Strainer 150
	Male Ball x Square Hole Strainer 150
	Male Ball Outlet Y 150
	Female Socket Outlet Y..... 151
	Male Ball Outlet Tee..... 151
	Female Socket Outlet Tee 151
	Safety Pin 152
	Lever Assist Bar 152
	Buna Gasket 152







TYPE A

	Safety Pin 155
	Buna Gasket 155
	Female Socket x Hose Shank..... 153
	Male Ball x Hose Shank 153
	Male Ball x Hose Shank (Includes Connection Ring) 153

Because we continually examine ways to improve our products, we reserve the right to alter specifications or discontinue products without prior notice.

Index *(continued)*

TYPE A *(continued)*

	Female Socket x 150# ASA Flange (Includes Buna Gasket).....	153
	90° Elbow Female Socket x Male Ball	154
	45° Elbow Female Socket x Male Ball	154
	Female Socket Plug	154
	Male Ball Plug.....	154
	Lever Assist Bar.....	155

Because we continually examine ways to improve our products, we reserve the right to alter specifications or discontinue products without prior notice.

SPHERE LOCK™ ADVANTAGES

GENERAL APPLICATIONS

Transfer of freshwater or wastewater in agricultural, construction, septic, mining and other industrial applications.

CONSTRUCTION

High-grade, high-tensile, hot dipped galvanized steel.

SERVICE TEMPERATURE RANGE

-40°F (-40°C) to +250°F (+121°C)

Sphere Lock couplings, also referred to as ball and socket couplings, consist of male (ball) and female (socket) ends. The rounded male end nests in the concave female end, which contains a Buna gasket for sealing. The connection is tightened by pushing down on a lever or bar.

Sphere Lock couplings are highly durable, with excellent resistance to impacts and vibration, making them ideal for highly demanding outdoor applications. They're able to handle full vacuum and higher pressures than standard cam-lock couplings.

Sphere Lock couplings allow greater ease when connecting than most other coupling types. Whereas most other couplings must be aligned perfectly straight, Sphere Lock couplings can connect at angles of up to 30°, which is beneficial when conditions make a perfectly straight connection difficult.

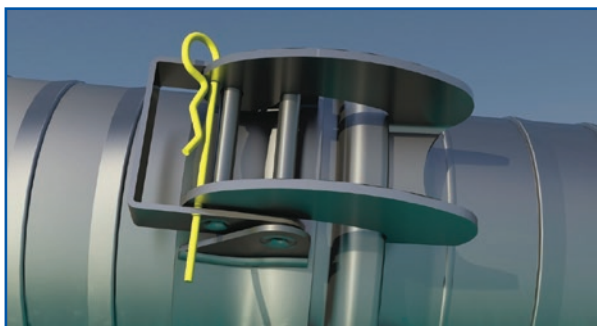
Non Sphere Lock couplings require perfectly straight connections.



Sphere Lock couplings allow for angled/offset connections.



Safety pins are available for Sphere Lock couplings to prevent an accidental opening while in service, which can lead to unwanted product spillage.



The Sphere Lock coupling's safety pin securely prevents unwanted opening.



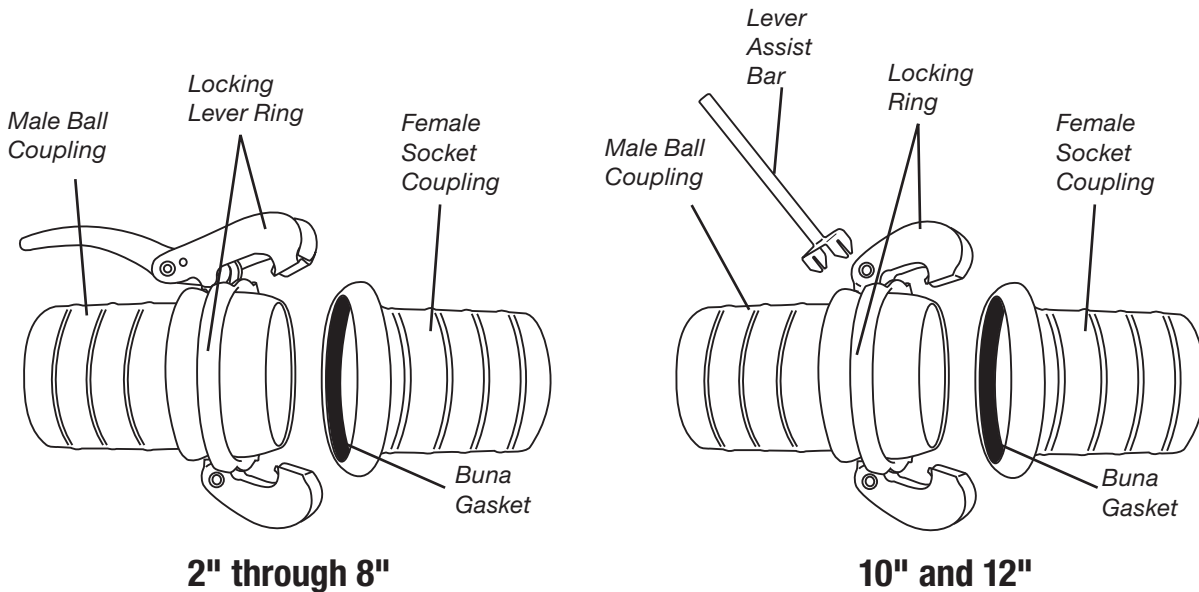
Non Sphere Lock handles tied down with rope, susceptible to unwanted opening.

Because we continually examine ways to improve our products, we reserve the right to alter specifications or discontinue products without prior notice.

SPHERE LOCK™ CONNECTION TYPES

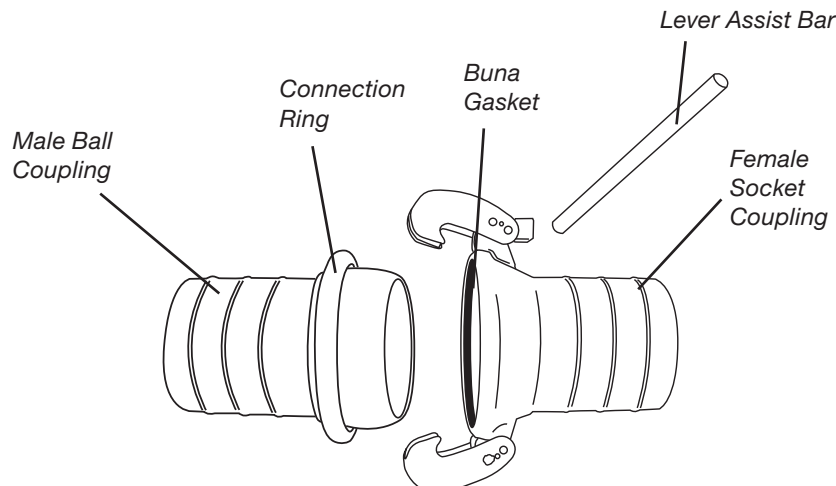
TYPE B CONNECTION

The type B connection is the most popular, consisting of a male ball coupling, female socket coupling and either a locking lever ring (2" through 8") or locking ring (10" and 12"), which fits over the male ball coupling's shank. The latches on the locking rings hook onto the female coupling and are tightened by either pushing down on the locking lever ring's handle, or in the case of the locking ring, a separate lever assist bar is used.



TYPE A CONNECTION

The type A connection is less common than type B and generally only available in larger sizes. It consists of the male ball coupling, the female socket coupling and a connection ring, which fits over the male ball coupling's shank. Instead of using a separate locking lever ring on the male ball coupling, the latches are attached directly to the female socket coupling and hook over the connection ring on the male. The connection is tightened by pushing down on a separate lever assist bar.



Because we continually examine ways to improve our products, we reserve the right to alter specifications or discontinue products without prior notice.

SPHERE LOCK™ – TYPE B

VIEW ONLINE



SCAN FOR INFO

or

visit
KOA.link/Sphere-Lock_Type-B-1



SLB-FH Series

Female Socket x Hose Shank *(Includes Buna Gasket)*

Part Number	Size (in)	PSI Rating at 70°F	Weight Each (lbs)	Standard Carton
SLB-FH200	2	290	0.81	1
SLB-FH300	3	290	1.56	1
SLB-FH400	4	217	3.81	1
SLB-FH600	6	175	6.34	1
SLB-FH800	8	175	11.66	1
SLB-FH1000	10	175	20.26	1
SLB-FH1200	12	175	21.82	1



SLB-CRFH Series

Female Socket X Hose Shank HD Crimp *(Includes Buna Gasket)*

Part Number	Size (in)	PSI Rating at 70°F	Weight Each (lbs)	Standard Carton
SLB-CRFH400	4	217	5.40	1
SLB-CRFH600	6	175	10.56	1
SLB-CRFH800	8	175	17.81	1



SLB-MH Series

Male Ball x Hose Shank

Part Number	Size (in)	PSI Rating at 70°F	Weight Each (lbs)	Standard Carton
SLB-MH200	2	290	0.79	1
SLB-MH300	3	290	1.50	1
SLB-MH400	4	217	3.53	1
SLB-MH600	6	175	5.58	1
SLB-MH800	8	175	10.25	1
SLB-MH1000	10	175	21.05	1
SLB-MH1200	12	175	22.11	1



SLB-CRMH Series

Male Ball X Hose Shank HD Crimp

Part Number	Size (in)	PSI Rating at 70°F	Weight Each (lbs)	Standard Carton
SLB-CRMH400	4	217	5.42	1
SLB-CRMH600	6	175	10.31	1
SLB-CRMH800	8	175	17.57	1

Because we continually examine ways to improve our products, we reserve the right to alter specifications or discontinue products without prior notice.

VIEW ONLINE



SCAN FOR INFO

visit
KOA.link/Sphere-Lock_Type-B-2

SPHERE LOCK™ – TYPE B

SLB-PCM Series
Male Ball X Polycrimp HDPE



Part Number	Size (in)	PSI Rating at 70°F	Weight Each (lbs)	Standard Carton
SLB-PCM400	4	125	5.76	1
SLB-PCM600	6	125	12.52	1
SLB-PCM800	8	125	19.43	1

SLB-PCF Series
Female Socket X Polycrimp HDPE
(Includes Buna Gasket)



Part Number	Size (in)	PSI Rating at 70°F	Weight Each (lbs)	Standard Carton
SLB-PCF400	4	125	6.55	1
SLB-PCF600	6	125	11.70	1
SLB-PCF800	8	125	19.50	1

SLB-LR Series
Locking Lever Ring



Part Number	Size (in)	PSI Rating at 70°F	Weight Each (lbs)	Standard Carton
SLB-LR200	2	290	1.01	1
SLB-LR300	3	290	2.31	1
SLB-LR400	4	217	4.45	1
SLB-LR600	6	175	9.30	1
SLB-LR800	8	175	13.49	1

SLB-LR Series*
Locking Ring



Part Number	Size (in)	PSI Rating at 70°F	Weight Each (lbs)	Standard Carton
SLB-LR1000	10	175	24.27	1
SLB-LR1200	12	175	35.05	1

* Requires Lever Assist Bar (Type B) to couple (SLB-LV) page 152.

Because we continually examine ways to improve our products, we reserve the right to alter specifications or discontinue products without prior notice.

SPHERE LOCK™ – TYPE B

VIEW ONLINE



SCAN FOR INFO

or

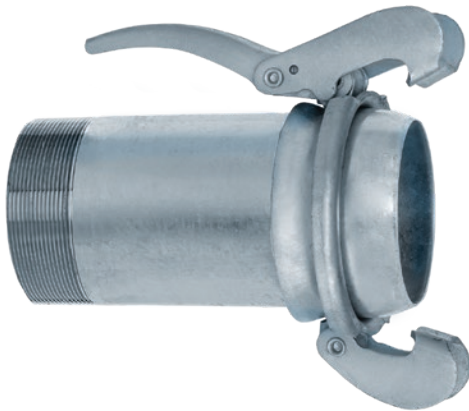
visit
KOA.link/Sphere-Lock_Type-B-3



SLB-FP Series

Female Socket x Male NPT *(Includes Buna Gasket)*

Part Number	Size (in)	PSI Rating at 70°F	Weight Each (lbs)	Standard Carton
SLB-FP200	2	290	0.97	1
SLB-FP300	3	290	1.78	1
SLB-FP400	4	217	3.59	1
SLB-FP600	6	175	7.12	1
SLB-FP800	8	175	13.57	1



SLB-MP Series

Male Ball x Male NPT *(Includes Locking Lever Ring)*

Part Number	Size (in)	PSI Rating at 70°F	Weight Each (lbs)	Standard Carton
SLB-MP200	2	290	3.04	1
SLB-MP300	3	290	6.18	1
SLB-MP400	4	217	10.62	1
SLB-MP600	6	175	22.61	1
SLB-MP800	8	175	38.18	1



SLB-MPLG Series

Male Ball Plug *(Includes Locking Lever Ring)**

Part Number	Size (in)	PSI Rating at 70°F	Weight Each (lbs)	Standard Carton
SLB-MPLG200	2	290	1.52	1
SLB-MPLG300	3	290	2.98	1
SLB-MPLG400	4	217	6.33	1
SLB-MPLG600	6	175	12.66	1
SLB-MPLG800	8	175	19.88	1
SLB-MPLG1200	12	175	48.72	1

* 12" size includes Locking Ring, requires Lever Assist Bar (Type A) to couple (SLA-LV) page 155.

Because we continually examine ways to improve our products, we reserve the right to alter specifications or discontinue products without prior notice.

VIEW ONLINE

SPHERE LOCK™ – TYPE B



SCAN FOR INFO

visit
KOA.link/Sphere-Lock_Type-B-4



SLB-FPLG Series
Female Socket Plug *(Includes Buna Gasket)*

Part Number	Size (in)	PSI Rating at 70°F	Weight Each (lbs)	Standard Carton
SLB-FPLG200	2	290	0.39	1
SLB-FPLG300	3	290	0.75	1
SLB-FPLG400	4	217	2.20	1
SLB-FPLG600	6	175	4.03	1
SLB-FPLG800	8	175	7.65	1
SLB-FPLG1200	12	175	19.18	1



SLB-FLM Series
Male Ball x 150# ASA Flange *(Includes Locking Lever Ring)*

Part Number	Size (in)	PSI Rating at 70°F	Flange Bolt Holes (number)	Flange Thickness (in)	Weight Each (lbs)	Standard Carton
SLB-FLM400	4	217	8	.47	14.33	1
SLB-FLM600	6	175	8	.47	23.48	1
SLB-FLM800	8	175	8	.47	37.37	1
▣ SLB-FLM1000	10	175	12	.59	58.89	1
▣ SLB-FLM1200	12	175	12	.59	80.10	1



SLB-FLF Series
Female Socket x 150# ASA Flange *(Includes Buna Gasket)*

Part Number	Size (in)	PSI Rating at 70°F	Flange Bolt Holes (number)	Flange Thickness (in)	Weight Each (lbs)	Standard Carton
SLB-FLF400	4	217	8	.47	9.34	1
SLB-FLF600	6	175	8	.47	13.16	1
SLB-FLF800	8	175	8	.47	20.27	1
▣ SLB-FLF1000	10	175	12	.59	30.84	1
▣ SLB-FLF1200	12	175	12	.59	46.85	1

▣ Denotes non-stock item. Contact Kuriyama customer service for price and availability.

Because we continually examine ways to improve our products, we reserve the right to alter specifications or discontinue products without prior notice.

SPHERE LOCK™ – TYPE B

VIEW ONLINE



SCAN FOR INFO

or

visit
KOA.link/Sphere-Lock_Type-B-5



SLB-90EL Series

90° Elbow Female Socket x Male Ball

(Includes Buna Gasket and Locking Lever Ring)

Part Number	Size (in)	PSI Rating at 70°F	Weight Each (lbs)	Standard Carton
SLB-90EL400	4	217	12.05	1
SLB-90EL600	6	175	26.09	1
SLB-90EL800	8	175	32.76	1
▀ SLB-90EL1200	12	175	79.71	1



SLB-45EL Series

45° Elbow Female Socket x Male Ball

(Includes Buna Gasket and Locking Lever Ring)

Part Number	Size (in)	PSI Rating at 70°F	Weight Each (lbs)	Standard Carton
SLB-45EL400	4	217	10.06	1
SLB-45EL600	6	175	20.10	1
SLB-45EL800	8	175	28.46	1
▀ SLB-45EL1200	12	175	70.11	1



SLB-FMR Series

Female Socket x Male Ball Reducer

(Includes Buna Gasket and Locking Lever Ring)

Part Number	Female Socket Size (in)	Male Ball Size (in)	PSI Rating at 70°F	Weight Each (lbs)	Standard Carton
SLB-FMR4060	4	6	175	15.30	1
SLB-FMR6040	6	4	175	10.75	1
SLB-FMR6080	6	8	175	25.74	1
SLB-FMR8060	8	6	175	22.15	1

▀ Denotes non-stock item. Contact Kuriyama customer service for price and availability.

Because we continually examine ways to improve our products, we reserve the right to alter specifications or discontinue products without prior notice.

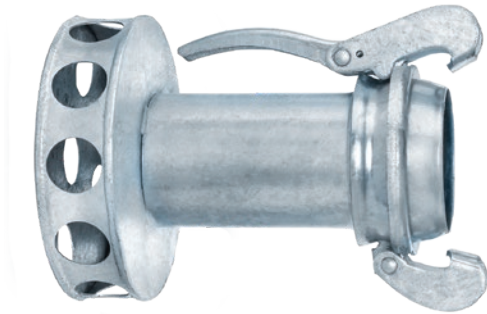
VIEW ONLINE

SPHERE LOCK™ – TYPE B



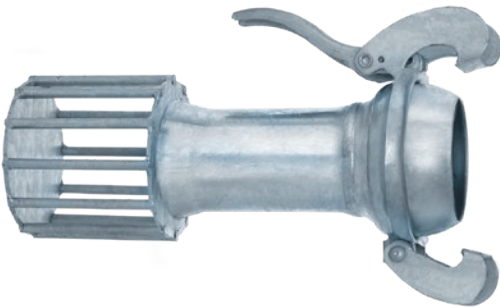
SCAN FOR INFO

visit
KOA.link/Sphere-Lock_Type-B-6



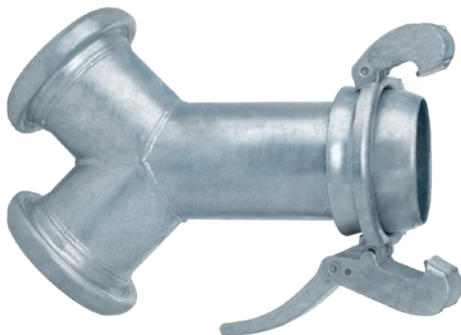
SLB-MRHS Series
Male Ball x Round Hole Strainer
(Includes Locking Lever Ring)

Part Number	Size (in)	PSI Rating at 70°F	Weight Each (lbs)	Standard Carton
SLB-MRHS400	4	217	10.95	1
SLB-MRHS600	6	175	20.83	1
SLB-MRHS800	8	175	42.88	1
▶ SLB-MRHS1200	12	175	74.29	1



SLB-MSHS Series
Male Ball x Square Hole Strainer
(Includes Locking Lever Ring)

Part Number	Size (in)	PSI Rating at 70°F	Weight Each (lbs)	Standard Carton
SLB-MSHS400	4	217	12.96	1
SLB-MSHS600	6	175	23.58	1
SLB-MSHS800	8	175	35.27	1



SLB-YMFF Series
Male Ball Outlet Y
(Includes Buna Gaskets and Locking Lever Ring)

Part Number	Size (in)	PSI Rating at 70°F	Weight Each (lbs)	Standard Carton
▶ SLB-YMFF400	4	217	13.00	1
▶ SLB-YMFF600	6	175	32.40	1
▶ SLB-YMFF800	8	175	42.00	1
▶ SLB-YMFF1200	12	175	129.00	1

▶ Denotes non-stock item. Contact Kuriyama customer service for price and availability.

Because we continually examine ways to improve our products, we reserve the right to alter specifications or discontinue products without prior notice.

SPHERE LOCK™ – TYPE B

VIEW ONLINE



SCAN FOR INFO

or

visit
KOA.link/Sphere-Lock_Type-B-7

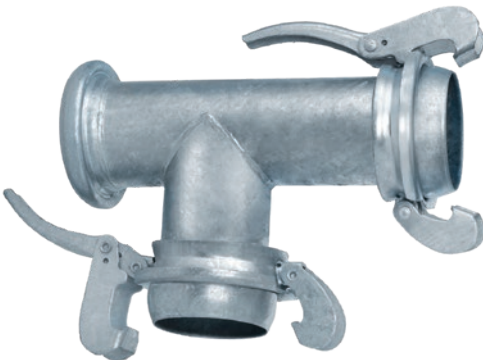


SLB-YFMM Series

Female Socket Outlet Y

(Includes Buna Gaskets and Locking Lever Ring)

Part Number	Size (in)	PSI Rating at 70°F	Weight Each (lbs)	Standard Carton
▶ SLB-YFMM400	4	217	18.00	1
▶ SLB-YFMM600	6	175	35.00	1
▶ SLB-YFMM800	8	175	57.00	1
▶ SLB-YFMM1200	12	175	165.00	1

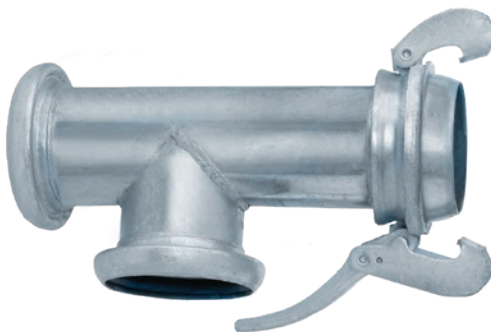


SLB-TMFM Series

Male Ball Outlet Tee

(Includes Buna Gasket and Locking Lever Rings)

Part Number	Size (in)	PSI Rating at 70°F	Weight Each (lbs)	Standard Carton
▶ SLB-TMFM400	4	217	19.97	1
▶ SLB-TMFM600	6	175	36.39	1
▶ SLB-TMFM800	8	175	55.86	1
▶ SLB-TMFM1200	12	175	138.44	1



SLB-TMFF Series

Female Socket Outlet Tee

(Includes Buna Gasket and Locking Lever Rings)

Part Number	Size (in)	PSI Rating at 70°F	Weight Each (lbs)	Standard Carton
▶ SLB-TMFF400	4	217	14.43	1
▶ SLB-TMFF600	6	175	25.16	1
▶ SLB-TMFF800	8	175	43.02	1
▶ SLB-TMFF1200	12	175	106.03	1

▶ Denotes non-stock item. Contact Kuriyama customer service for price and availability.

Because we continually examine ways to improve our products, we reserve the right to alter specifications or discontinue products without prior notice.

SPHERE LOCK™ – TYPE B

VIEW ONLINE



SCAN FOR INFO

visit
KOA.link/Sphere-Lock_Type-B-8



SLB-LV Series
Lever Assist Bar

Part Number	Size (in)	Weight Each (lbs)	Standard Carton
SLB-LV1000	10 & 12	2.23	1



SLB-SP Series
Safety Pin

Part Number	Size (in)	Weight Each (lbs)	Standard Carton
SLB-SP200	2	0.03	25
SLB-SP300	3	0.03	25
SLB-SP400	4	0.06	25
SLB-SP600	6 & 8	0.09	25
SLB-SP1000	10 & 12	0.15	10



SLB-BUNA Series
Buna Gasket

Part Number	Size (in)	Weight Each (lbs)	Standard Carton
SLB-BUNA200	2	0.04	1
SLB-BUNA300	3	0.13	1
SLB-BUNA400	4	0.24	1
SLB-BUNA600	6	0.48	1
SLB-BUNA800	8	0.57	1
SLB-BUNA1000	10	1.10	1
SLB-BUNA1200	12	1.76	1

Denotes non-stock item. Contact Kuriyama customer service for price and availability.

Because we continually examine ways to improve our products, we reserve the right to alter specifications or discontinue products without prior notice.

SPHERE LOCK™ – TYPE A

VIEW ONLINE



SCAN FOR INFO

or

visit
KOA.link/Sphere-Lock_Type-A-1



SLA-FH Series

Female Socket x Hose Shank *(Includes Buna Gasket)*

Part Number	Size (in)	PSI Rating at 70°F	Weight Each (lbs)	Standard Carton
▶ SLA-FH1000	10	72	25.00	1
SLA-FH1200	12	72	43.00	1

NOTE: Other sizes available upon request. Contact Kuriyama Customer Service for details.



SLA-MH Series

Male Ball x Hose Shank

Part Number	Size (in)	PSI Rating at 70°F	Weight Each (lbs)	Standard Carton
▶ SLA-MH1000	10	72	29.00	1
SLA-MH1200	12	72	43.85	1

NOTE: Other sizes available upon request. Contact Kuriyama Customer Service for details.



SLA-FLM Series

Male Ball x Hose Shank *(Includes Connection Ring)*

Part Number	Size (in)	PSI Rating at 70°F	Flange Bolt Holes (number)	Flange Thickness (in)	Weight Each (lbs)	Standard Carton
▶ SLA-FLM1000	10	72	12	.59	42.00	1
SLA-FLM1200	12	72	12	.59	60.41	1



SLA-FLF Series

Female Socket x 150# ASA Flange *(Includes Buna Gasket)*

Part Number	Size (in)	PSI Rating at 70°F	Flange Bolt Holes (number)	Flange Thickness (in)	Weight Each (lbs)	Standard Carton
▶ SLA-FLF1000	10	72	12	.59	41.00	1
SLA-FLF1200	12	72	12	.59	63.23	1

▶ Denotes non-stock item. Contact Kuriyama customer service for price and availability.

Because we continually examine ways to improve our products, we reserve the right to alter specifications or discontinue products without prior notice.

VIEW ONLINE

SPHERE LOCK™ – TYPE A



SCAN FOR INFO

visit
KOA.link/Sphere-Lock_Type-A-2



SLA-90EL Series

90° Elbow Female Socket x Male Ball
(Includes Buna Gasket)

Part Number	Size (in)	PSI Rating at 70°F	Weight Each (lbs)	Standard Carton
SLA-90EL1200	12	72	15.00	1



SLA-45EL Series

45° Elbow Female Socket x Male Ball
(Includes Buna Gasket)

Part Number	Size (in)	PSI Rating at 70°F	Weight Each (lbs)	Standard Carton
SLA-45EL1200	12	72	18.00	1



SLA-FPLG Series

Female Socket Plug *(Includes Buna Gasket)*

Part Number	Size (in)	PSI Rating at 70°F	Weight Each (lbs)	Standard Carton
SLA-FPLG1200	12	72	35.02	1



SLA-MPLG Series

Male Ball Plug

Part Number	Size (in)	PSI Rating at 70°F	Weight Each (lbs)	Standard Carton
SLA-MPLG1200	12	72	34.73	1

Denotes non-stock item. Contact Kuriyama customer service for price and availability.

Because we continually examine ways to improve our products, we reserve the right to alter specifications or discontinue products without prior notice.

SPHERE LOCK™ – TYPE A

VIEW ONLINE



SCAN FOR INFO

| or |

visit
KOA.link/Sphere-Lock_Type-A-3



SLA-LV Series
Lever Assist Bar

Part Number	Size (in)	Weight Each (lbs)	Standard Carton
SLA-LV1200	12	4.00	1



SLA-SP Series
Safety Pin

Part Number	Size (in)	Weight Each (lbs)	Standard Carton
▶ SLA-SP1000	10	0.08	10
SLA-SP1200	12	0.19	10



SLA-BUNA Series
Buna Gasket

Part Number	Size (in)	Weight Each (lbs)	Standard Carton
▶ SLA-BUNA1000	10	1.08	1
SLA-BUNA1200	12	1.50	1

Distributed by
Sterling

Hose, Reel & Supply, LLC.
1-855-577-HOSE (4673)

▶ Denotes non-stock item. Contact Kuriyama customer service for price and availability.

Because we continually examine ways to improve our products, we reserve the right to alter specifications or discontinue products without prior notice.